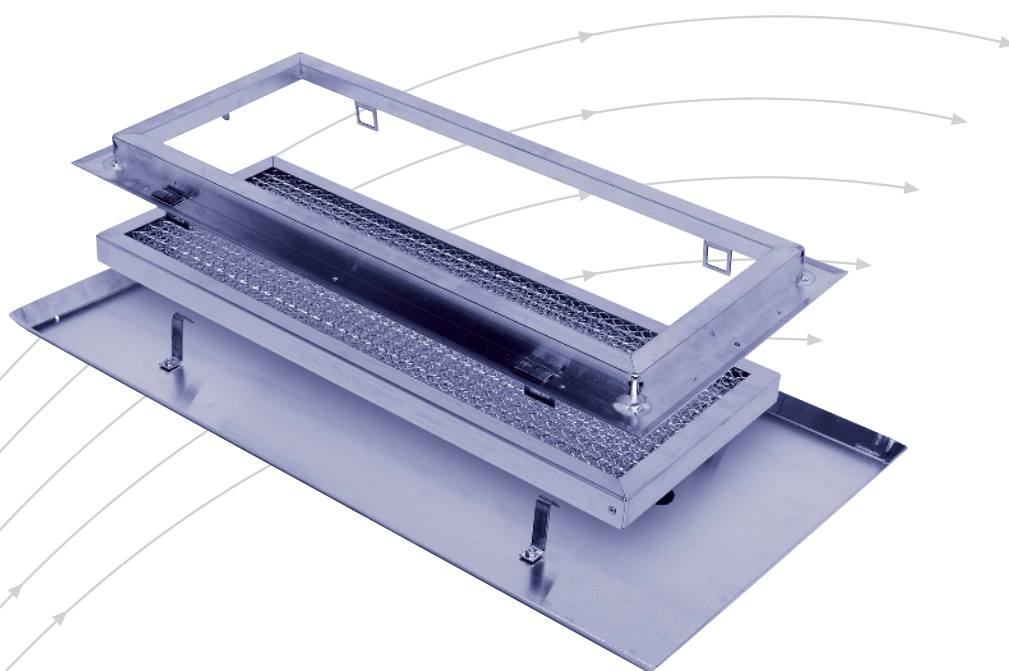


Grease filter

Types FA, FF, FLT, KF, FB and FBW



TROX[®] **TECHNIK**



TROX HESCO Schweiz AG
Walderstrasse 125
Postfach 455
CH - 8630 Rüti /ZH

Tel. +41 (0)55 250 71 11
Fax +41 (0)55 250 73 10
www.troxhesco.ch
info@troxhesco.ch

Contents · Application · Realisation · Dimensions

Contents

| | |
|--|----|
| Grease filter type FA - horizontal installation | |
| Application · Realisation · Dimensions | 2 |
| Installation · Technical Data | 3 |
| Grease filter type FF and FLT - vertical installation | |
| Application · Realisation · Dimensions | 4 |
| Application · Realisation · Dimensions | 5 |
| Grease filter type KF - vertical installation | |
| Application · Realisation · Dimensions | 6 |
| Installation · Technical Data | 7 |
| Grease filter Typ FB and FBW | |
| Application · Realisation · Dimensions · Installation | 8 |
| Application · Realisation · Dimensions · Installation | 9 |
| Technical Data | 10 |

Grease filter type FA

Filter cell with mounting frame of aluminium and attached grease drip tray for horizontal installation

Application

Grease filter **type FA** are suitable for exhaust systems at hotel- and other kitchens, canteens, etc.

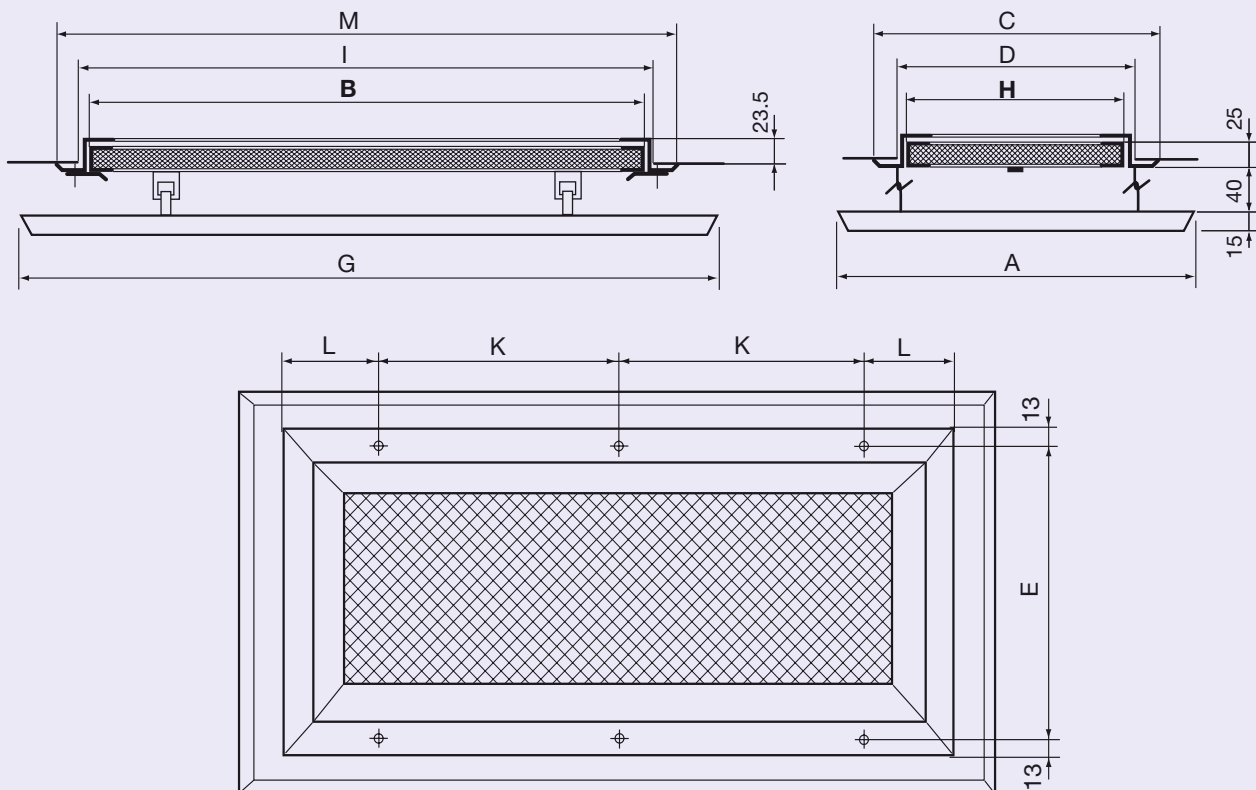
Realisation

A complete filter unit consists of:

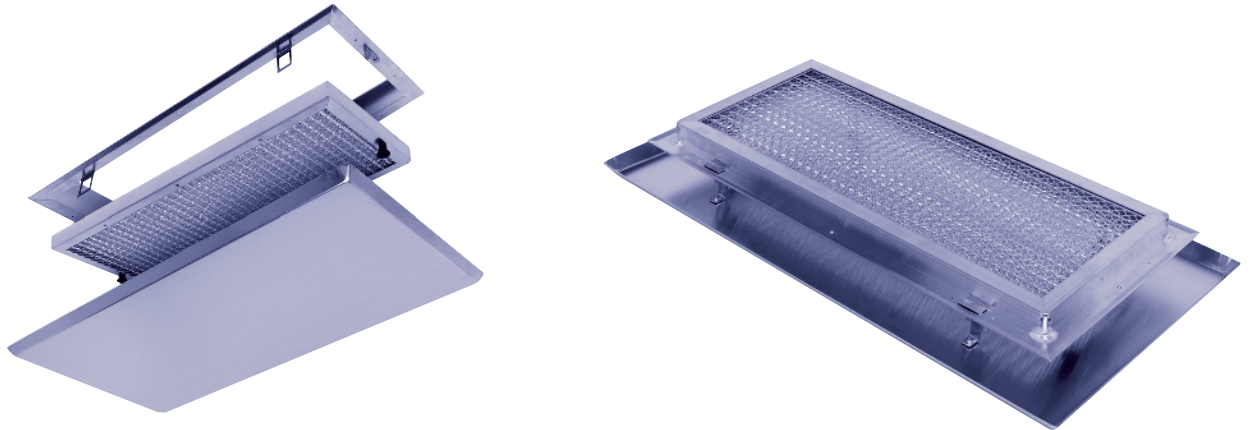
- 1 filter cell of aluminium weaving
- 1 mounting frame of sectional aluminium
- 1 attached grease drip tray of aluminium sheet

Cleaning: Remove filter element and dip and turn it thoroughly in hot water with an added detergent. Afterwards rinse it well with ordinary clean hot water.

Dimensions

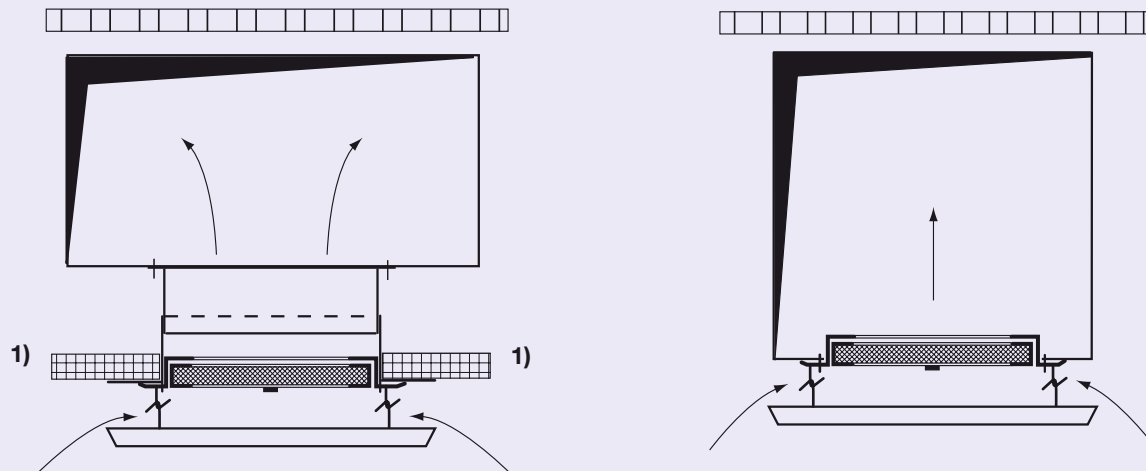


| Type | ND B × H | A | C | D | E | G | I | K | L | M | Recommended max. volumen flow rate [m ³ /h] |
|------|-------------|-----|-----|-----|-----|-----|-----|-----|----|-----|--|
| FA 0 | 200×200 | 320 | 253 | 212 | 227 | 320 | 212 | 227 | 13 | 251 | 200 |
| FA 1 | 500×200 | 320 | 253 | 212 | 227 | 620 | 512 | 201 | 75 | 551 | 500 |
| FA 2 | 500×350 | 470 | 403 | 362 | 377 | 620 | 512 | 201 | 75 | 551 | 1000 |
| FA 3 | 500×500 | 620 | 553 | 512 | 527 | 620 | 512 | 201 | 75 | 551 | 1500 |



Installation

Grease filter type FA are being installed horizontally beneath the exhaust air duct.

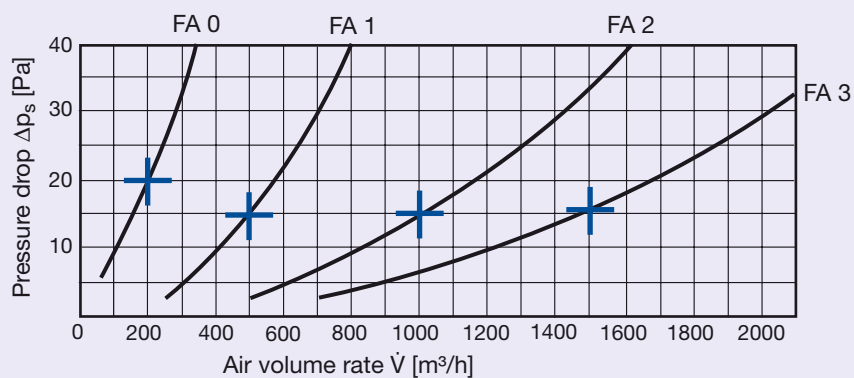


1) Suspended ceiling

Dimensioning

We recommend the following maximum air volume rate:

| FA 0 | FA 1 | FA 2 | FA 3 |
|-----------------------|-----------------------|------------------------|------------------------|
| 200 m ³ /h | 500 m ³ /h | 1000 m ³ /h | 1500 m ³ /h |



Application · Realisation · Dimensions

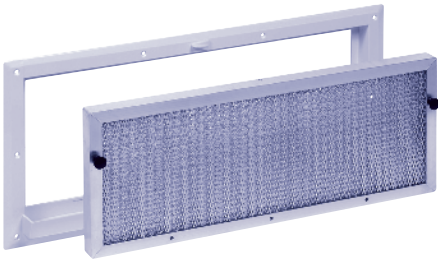
Grease filter type FF

Filter cell and mounting frame with dripping gutter
for vertical installation

Application

Grease filter **type FF** are suitable for exhaust systems at hotel- and other kitchens, canteens, etc.

FF



Realisation

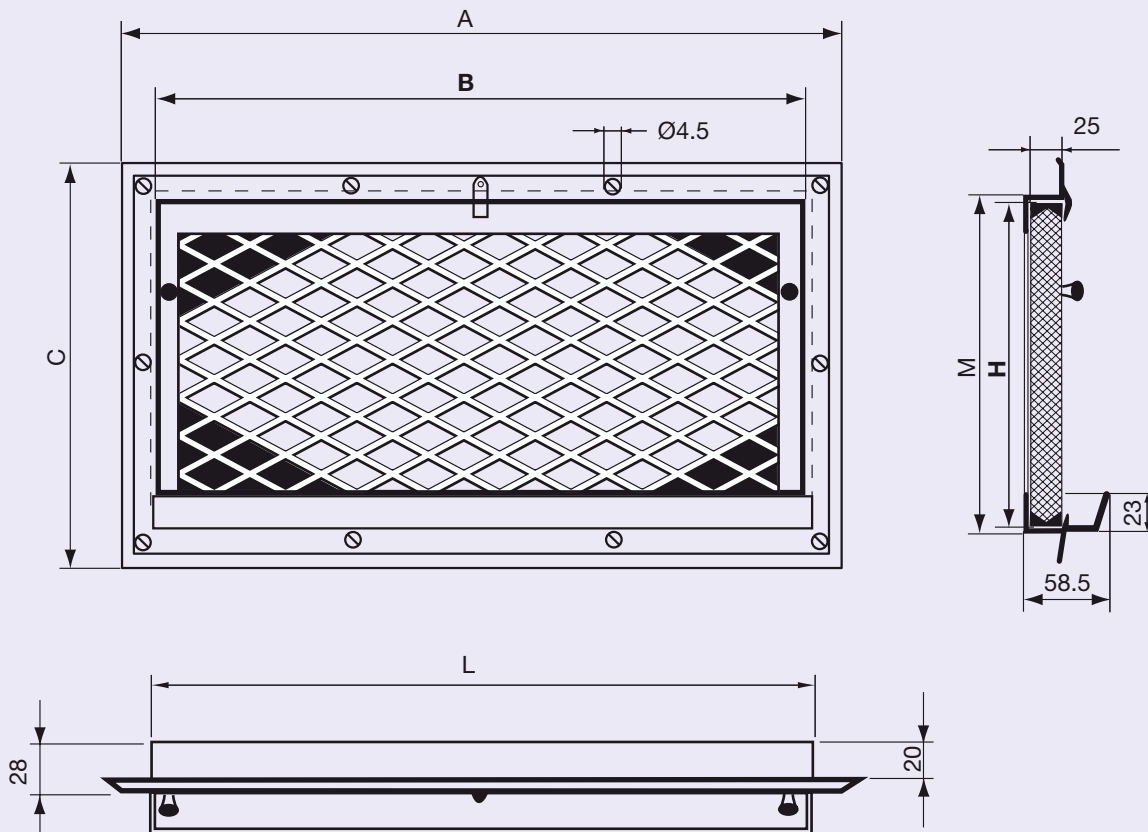
FF 15 + 20

A complete filter unit consists of:

- 1 Filter cell of aluminium weaving, filter cell frame of aluminium
- 1 mounting frame of plastic with dripping gutter, permissible operating temperature 80°C. Radiation-heat must also be considered.

Cleaning in hot water with an added detergent.

Dimensions type FF



| Type | ND | B | H | A | C | L | M | Recommended max. volumen flow rate [m³/h] |
|-------|---------|-----|-----|-----|-----|-----|-----|---|
| FF 15 | 500×150 | 499 | 149 | 554 | 204 | 507 | 158 | 350 |
| FF 20 | 500×200 | 499 | 199 | 554 | 254 | 507 | 208 | 500 |

Application · Realisation · Dimensions

Grease filter type FLT

Filter cell with welded dripping gutter and mounting frame of aluminium for vertical installation

Application

Grease filter **type FLT** are suitable for exhaust systems at hotel- and other kitchens, canteens, etc.

Realisation

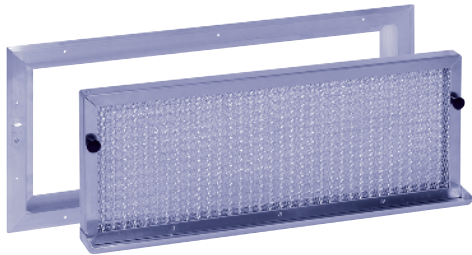
FLT 15 + 20

A complete filter unit consists of:

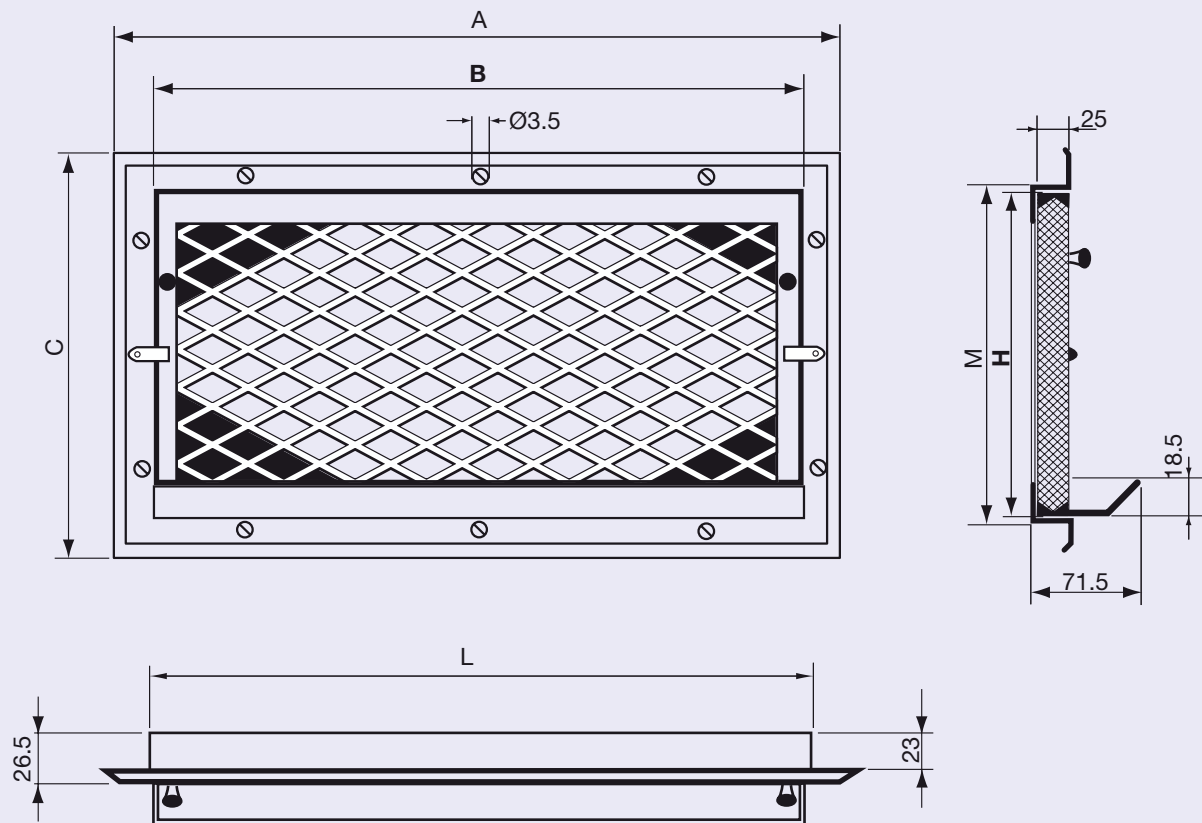
- 1 Filter cell of aluminium weaving,
- 1 filter cell frame of aluminium with welded dripping gutter
- 1 mounting frame of aluminium

Cleaning in hot water with an added detergent.

FLT



Dimensions type FLT

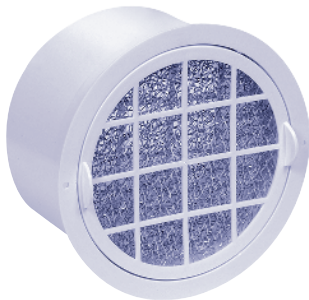


| Type | ND | B | H | A | C | L | M | Recommended max. volumen flow rate [m ³ /h] |
|--------|---------|-----|-----|-----|-----|-----|-----|--|
| FLT 15 | 500×150 | 499 | 151 | 554 | 203 | 505 | 156 | 350 |
| FLT 20 | 500×200 | 499 | 201 | 554 | 254 | 505 | 206 | 500 |

Application · Realisation · Dimensions

Grease filter type KF Filter cell and mounting frame for vertical installation

KF1



Application

Grease filter **type KF** are intended for domestic kitchen exhaust ventilation.

Realisation

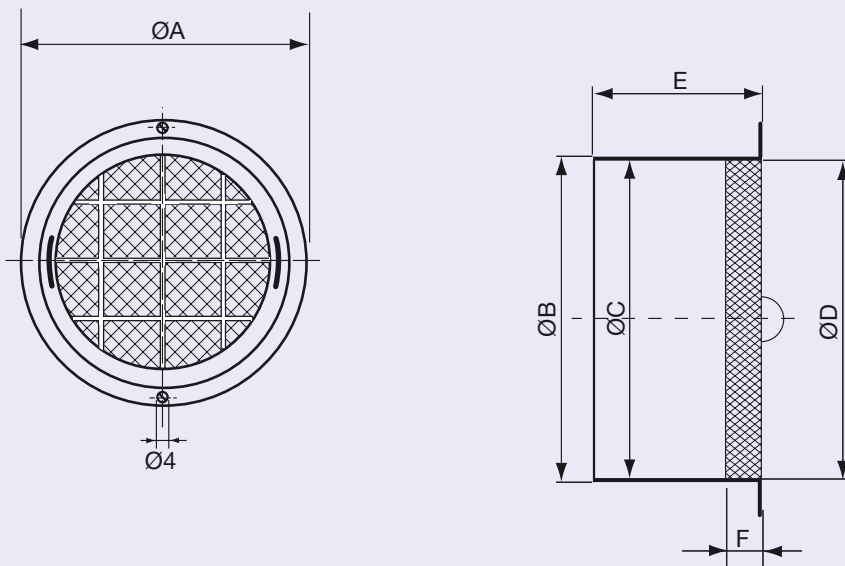
KF1

A complete filter unit consists of:

- 1 Filter cell of aluminium weaving, filter cell housing of white plastic
- 1 mounting frame of white plastic, permissible operating temperature 80°C. 80°C

Cleaning in hot water with an added detergent.

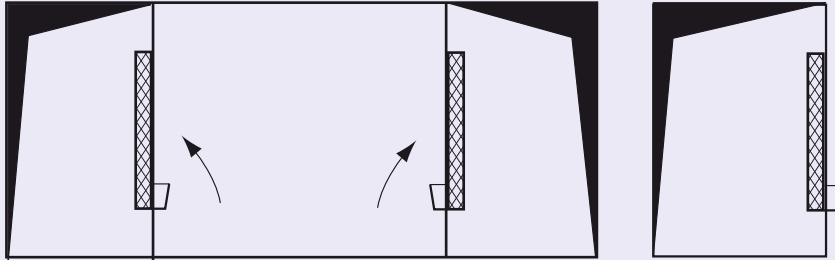
Dimensions type KF1



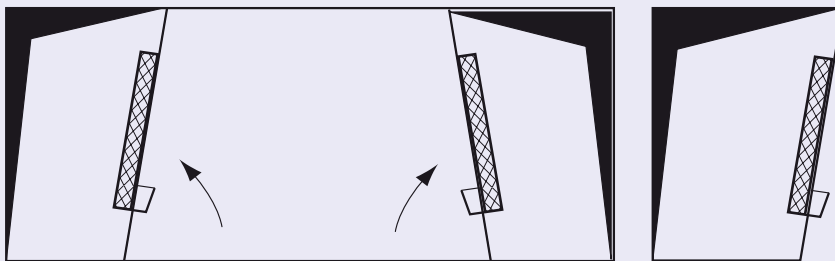
| Type | ND | ØA | ØB | ØC | ØD | E | F | Recommended max. volumen flow rate [m³/h] |
|------|-----|-----|-----|-------|-----|----|----|---|
| KF 1 | 145 | 170 | 150 | 144.8 | 145 | 90 | 25 | 100 |

Installation

Grease filters type FF are installed vertically, laterally into the exhaust air duct.



Filter inclination max. 15°



Dimensioning

We recommend the following maximum air volume rate:

KF 1

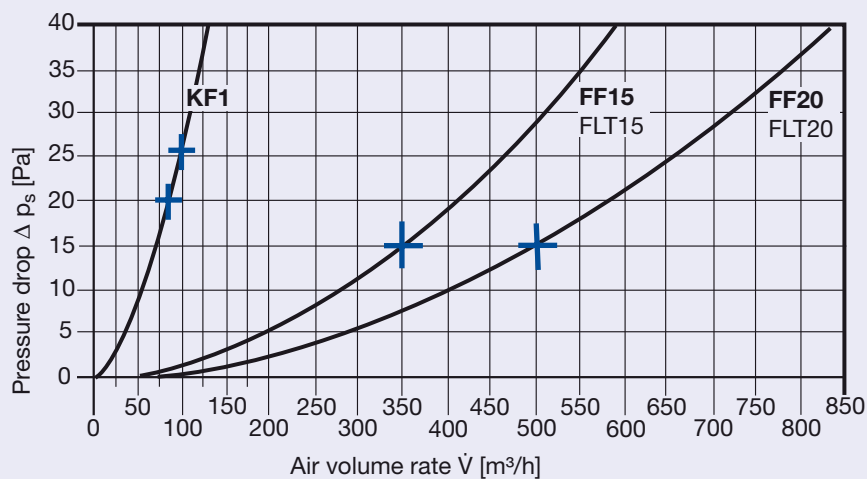
75 or 100 m³/h

FF 15 + FLT 15

350 m³/h

FF 20 + FLT 20

500 m³/h



Application · Realisation · Dimensions · Installation

Grease filter type FB

Filter cell and mounting frame of stainless steel, without dripping gutter

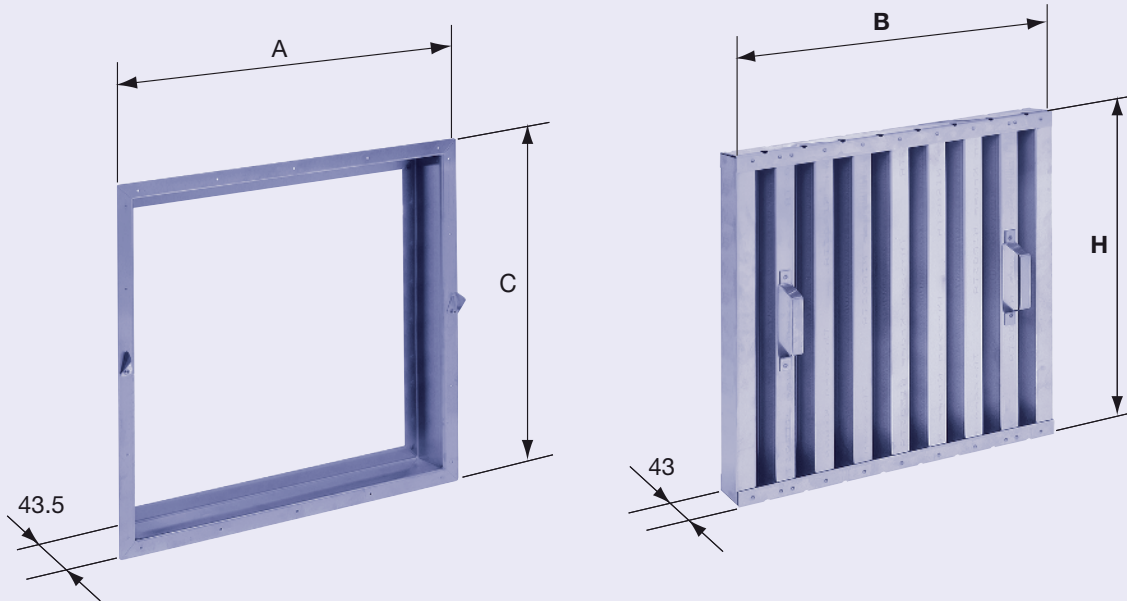
Application

The grease filters are used in kitchen hoods or in exhaust air ducts as grease or vapor separators. They are suitable for exhaust ventilation in the kitchen at hotels, canteens and hospitals, etc. The grease filters protect fans, ducts and facades from grease and contamination.

Realisation

Stainless sheet metal, V2A

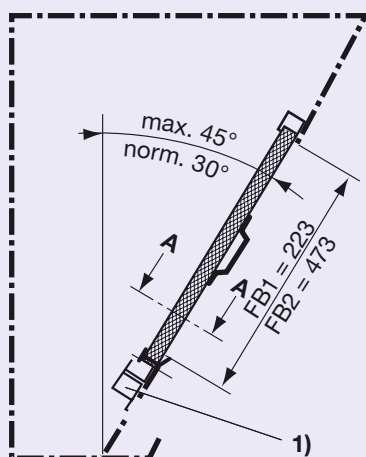
Dimensions type FB and ER



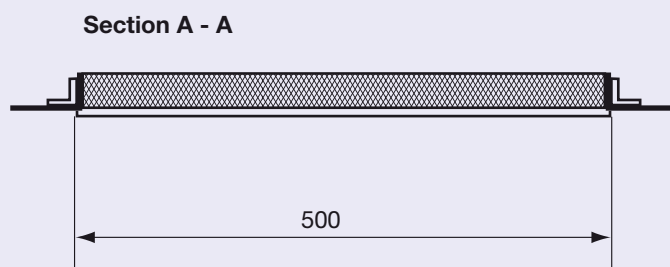
| Type | ND | B | H | A | C | Recess | | Recommended max. volumen flow rate [m³/h] |
|------|---------|-----|-----|-----|-----|---------|------------|---|
| | | | | | | with ER | without ER | |
| FB 1 | 500×250 | 498 | 248 | 554 | 304 | 511×261 | 500×223 | 400 - 500 |
| FB 2 | 500×500 | 498 | 498 | 554 | 554 | 511×511 | 500×473 | 800 - 1000 |

Installation in exhaust air hood

FB without mounting frame ER



1) Grease collection groove inclined towards drain sleeve



Application · Realisation · Dimensions · Installation

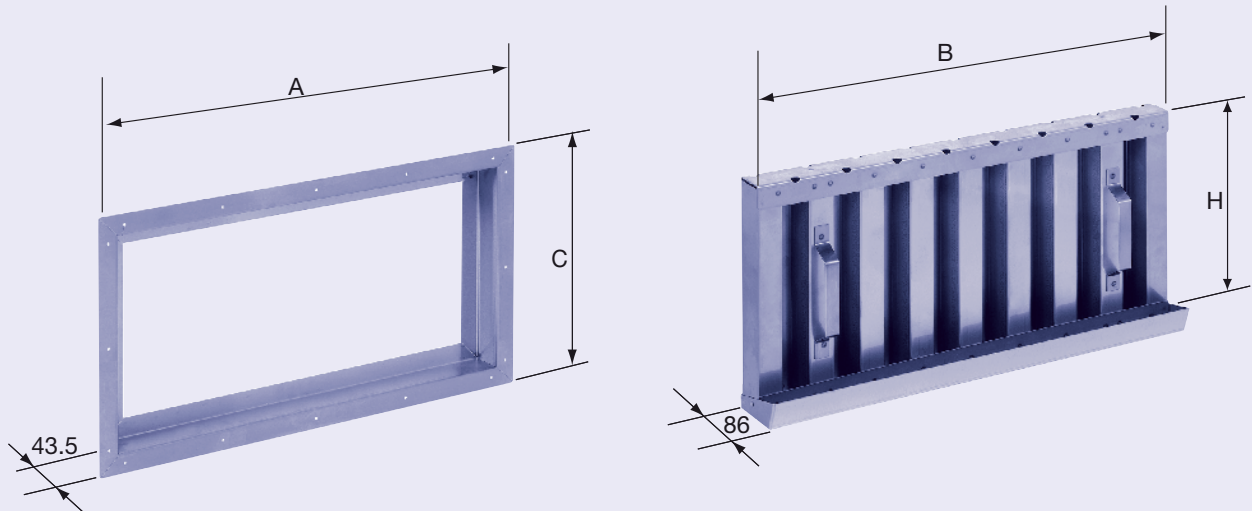
Grease filter type FBW

Filter cell with dripping gutter and mounting frame of stainless steel

Features

- Easy to install
- Excellent degree of separation
- High resistance to temperature
- Flameproof, i.e. flames will not pass through
- Easy to take off and easy to clean in a dishwasher (twice the week for best results)

Dimensions type FBW and ER

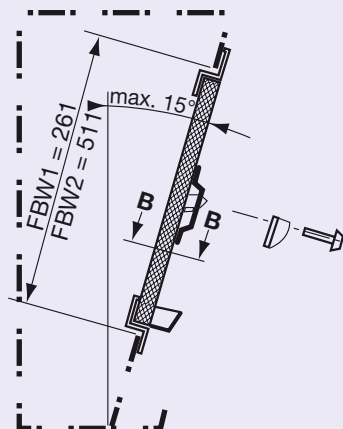


| Type | ND | B | H | A | C | Recess with ER | Recommended max. volumen flow rate [m³/h] |
|-------|---------|-----|-----|-----|-----|----------------|---|
| FBW 1 | 500×250 | 499 | 249 | 554 | 304 | 511×261 | 400 - 500 |
| FBW 2 | 500×500 | 499 | 499 | 554 | 554 | 511×511 | 800 - 1000 |

Other dimensions on request

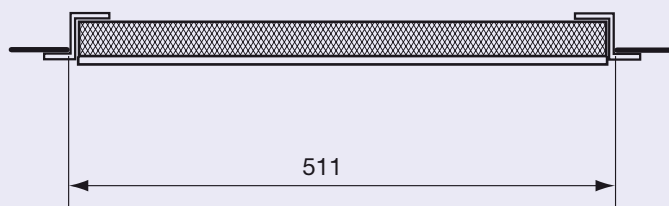
Installation in exhaust air hood

FB/FBW with mounting frame ER



Place hydrometric vane (type: Schiltknecht) into central area.

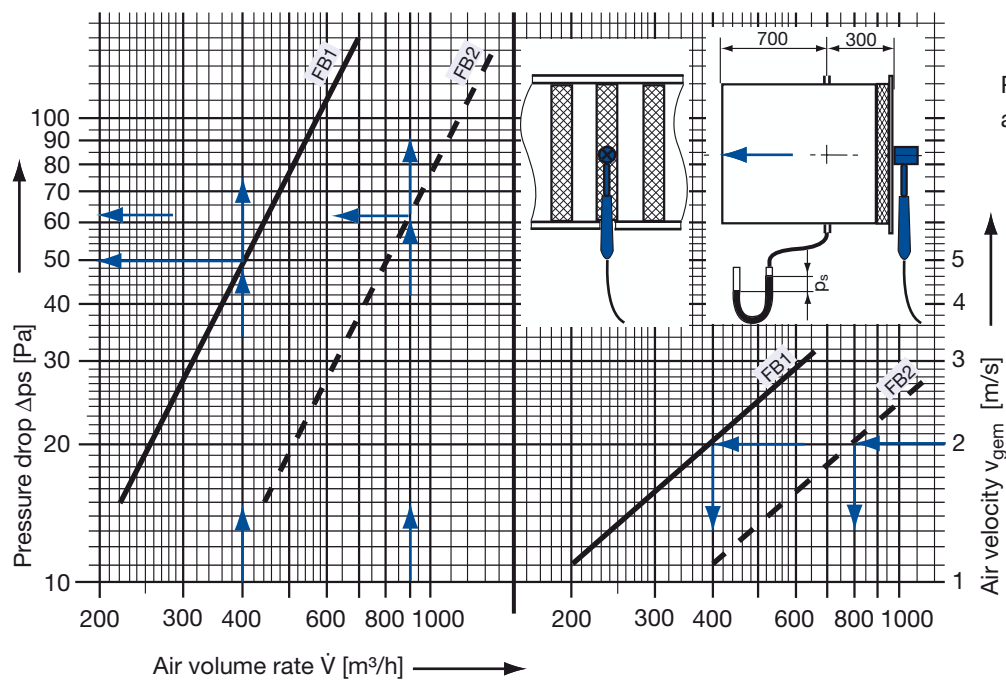
Section B - B



Included are 2 snap-type fasteners

Technical Data

Selection diagram



Place a vane anemometer \varnothing about 25 mm in the central area.

Mass

| | | | | | | | | |
|-------|---------|--------|--------|---------|--------|-------|---------|--------|
| 1 FB1 | 500×250 | 2.3 kg | 1 FBW1 | 500×250 | 2.8 kg | 1 ER1 | 503×253 | 1.1 kg |
| 1 FB2 | 500×500 | 3.9 kg | 1 FBW2 | 500×500 | 4.4 kg | 1 ER2 | 503×503 | 1.5 kg |