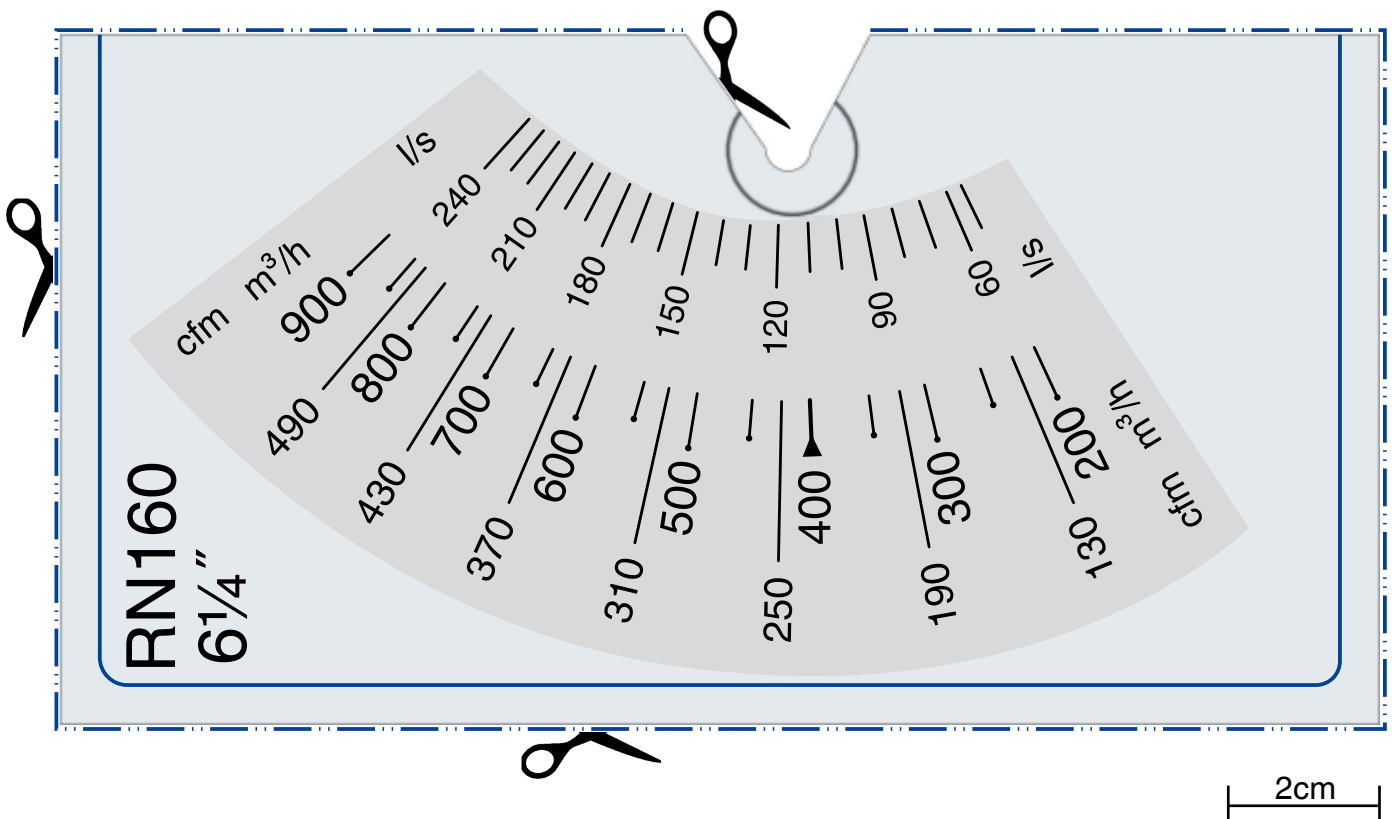
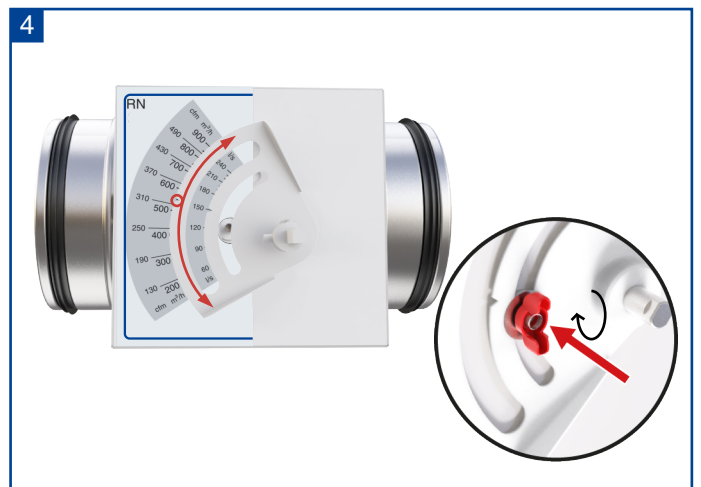
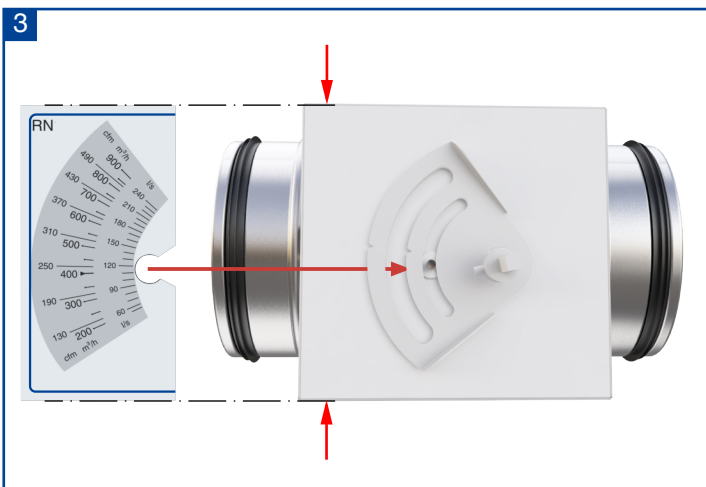
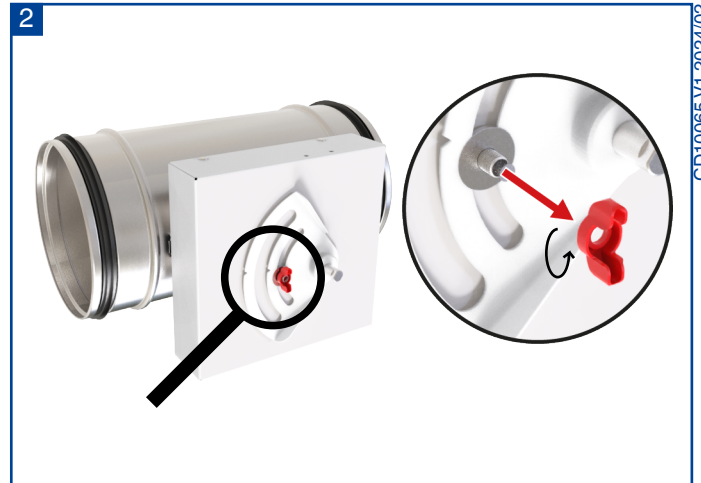
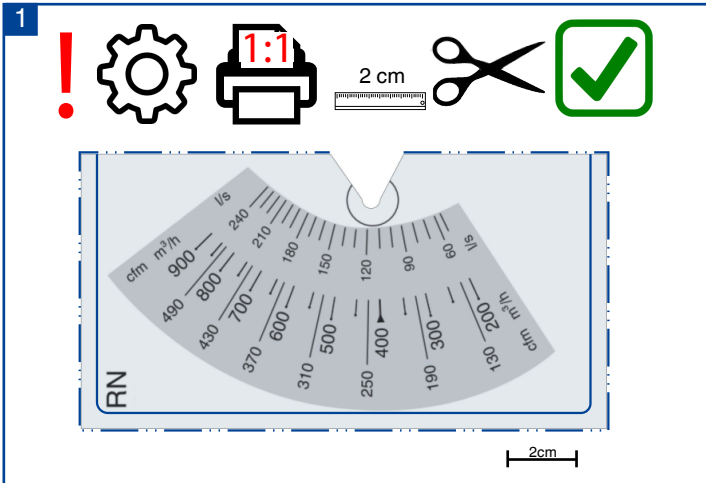
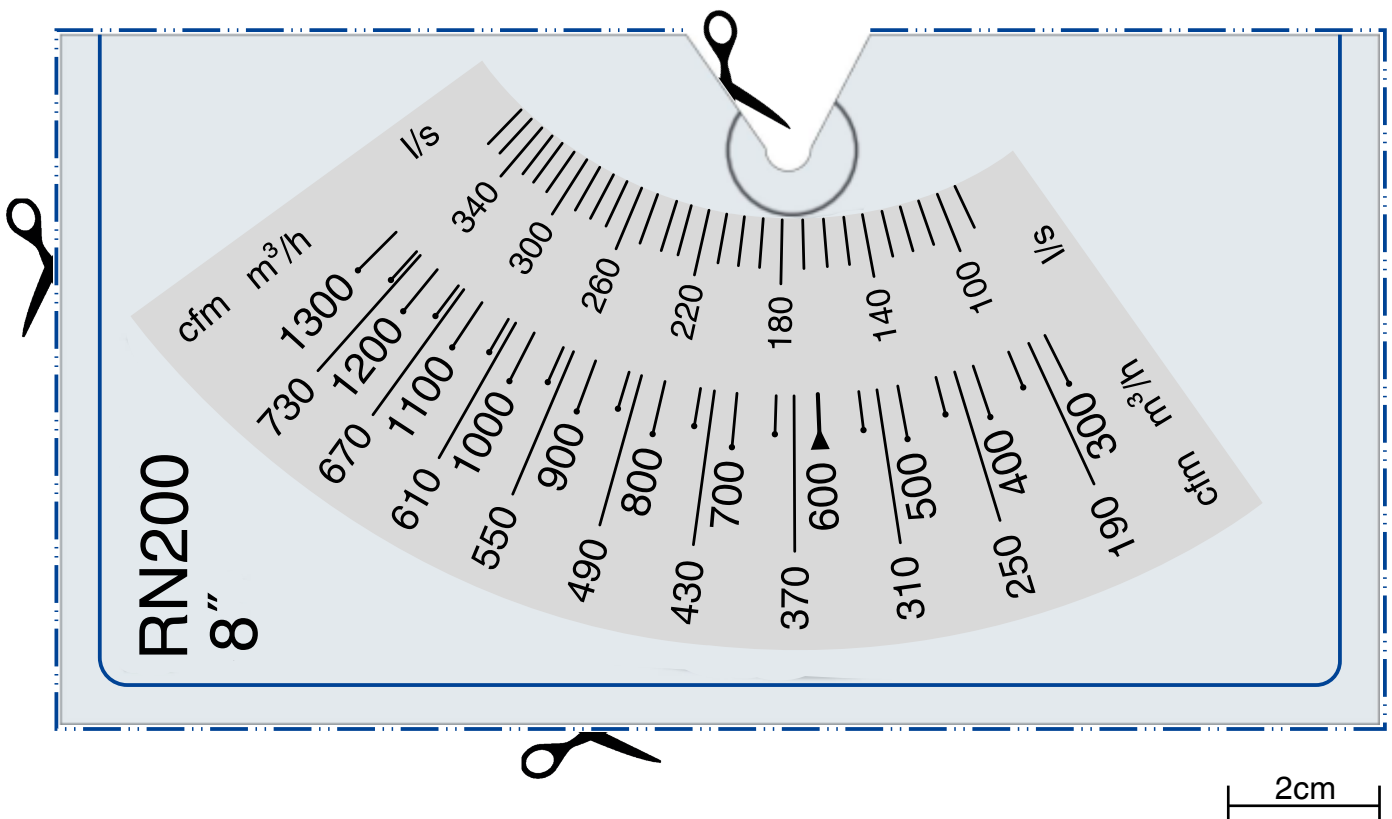
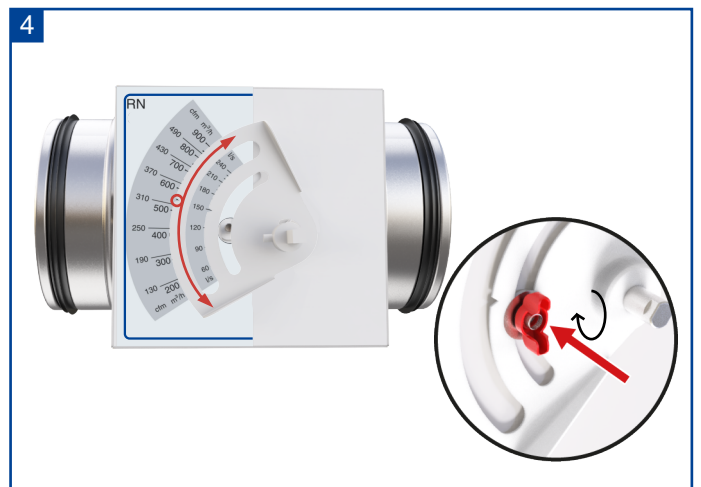
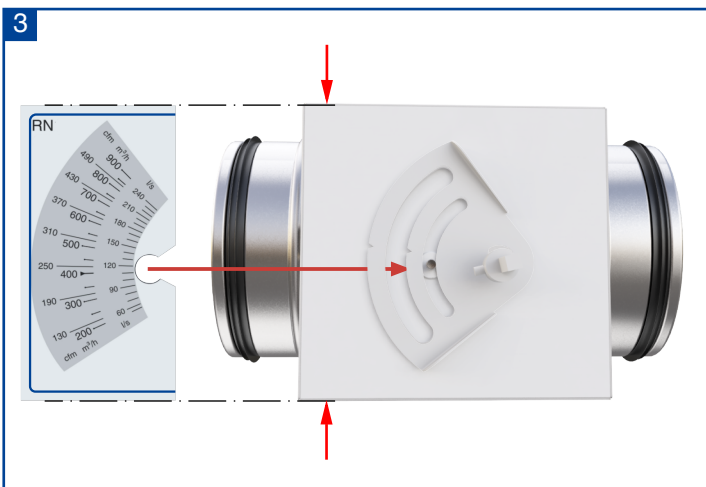
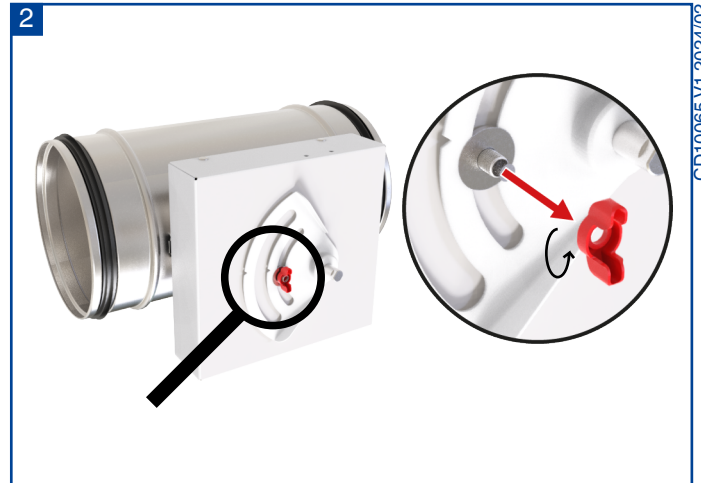
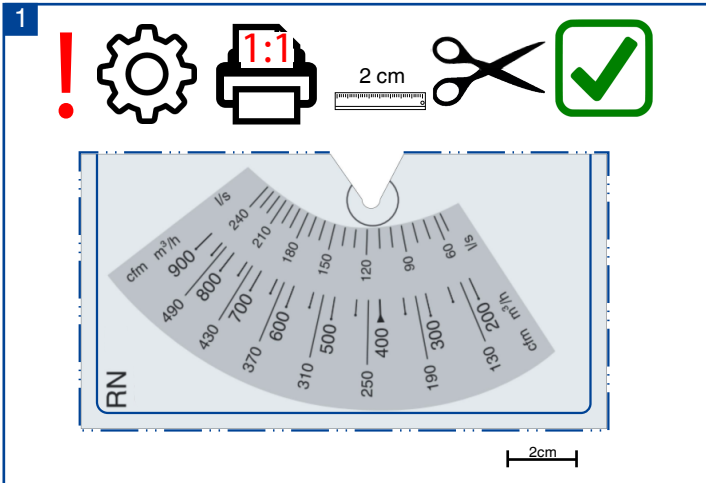


RN/RN-Ex 160

Hilfe zur Sollwerteneinstellung bei beschädigter/unleserlicher Skala
Setpoint adjustment aid for damaged/illegible scale

TROX® **TECHNIK**

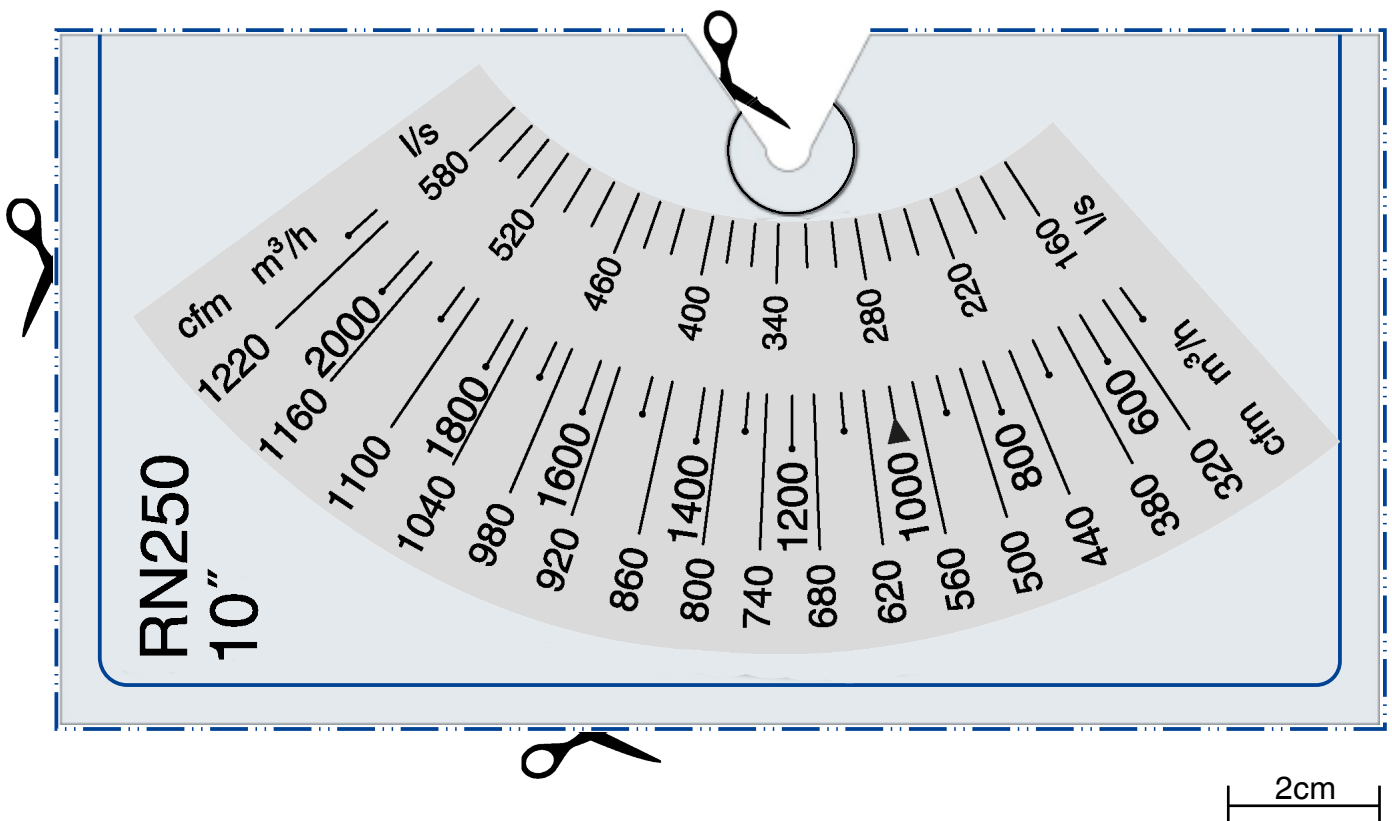
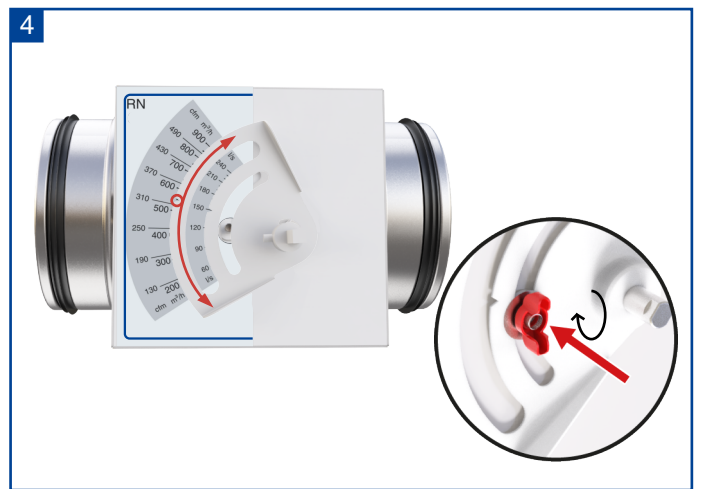
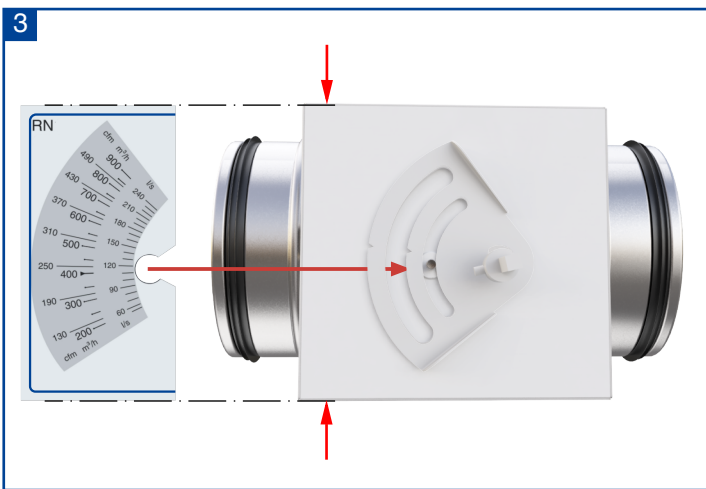
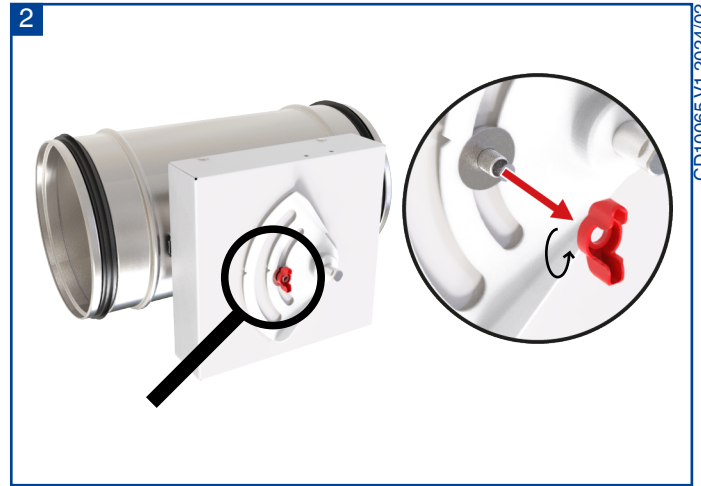
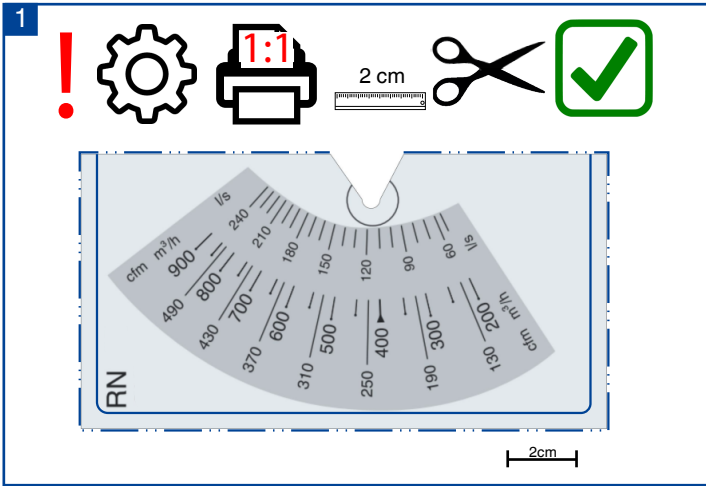




RN/RN-Ex 250

Hilfe zur Sollwerteneinstellung bei beschädigter/unleserlicher Skala
Setpoint adjustment aid for damaged/illegible scale

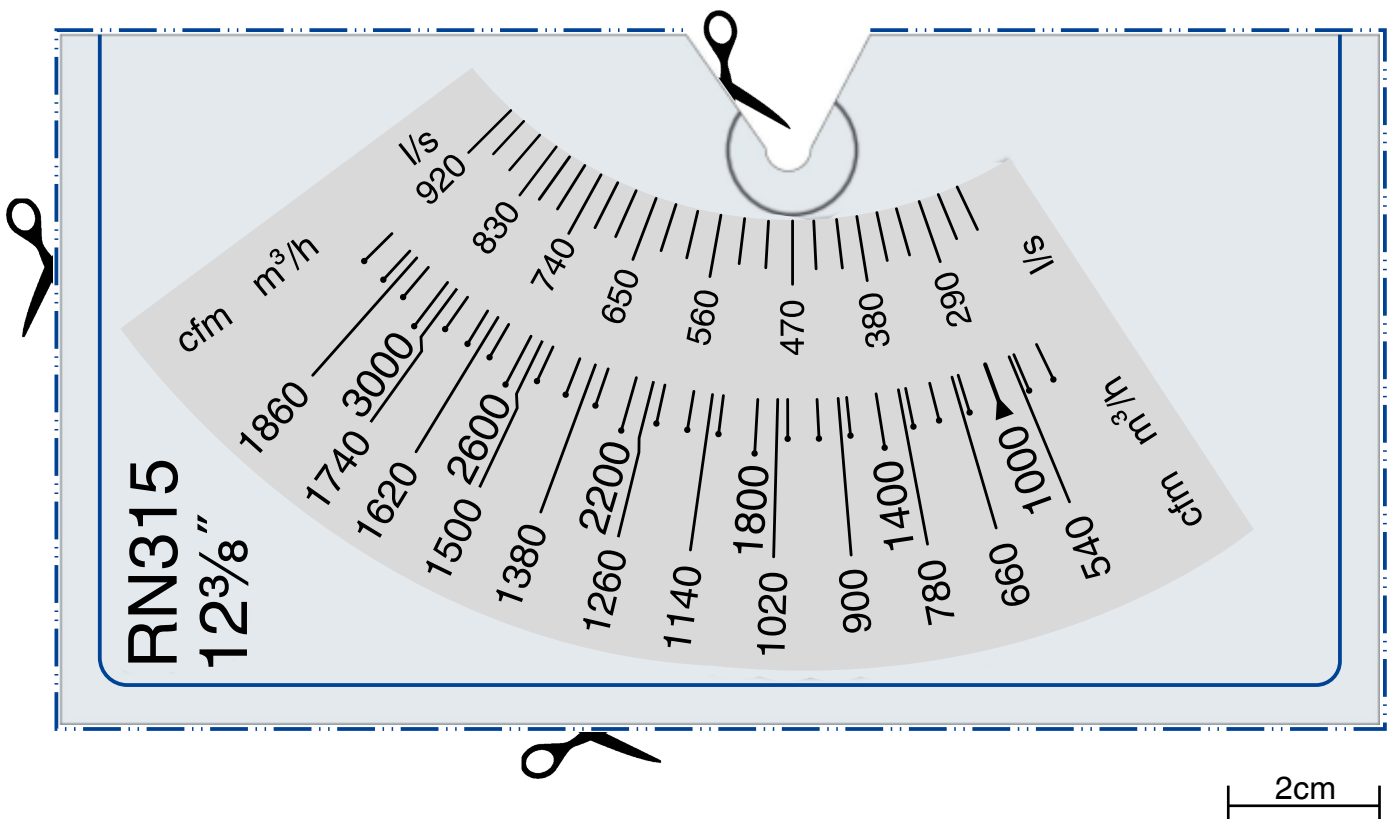
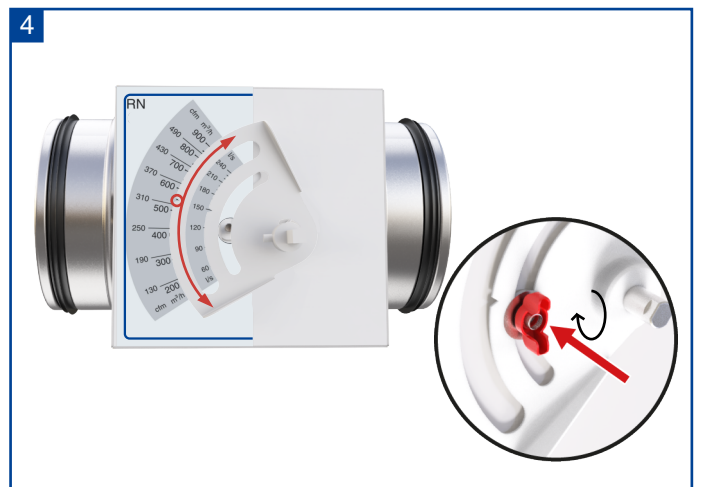
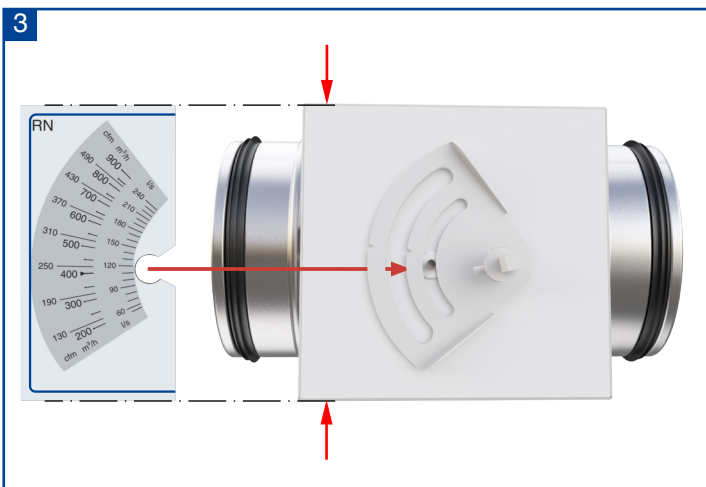
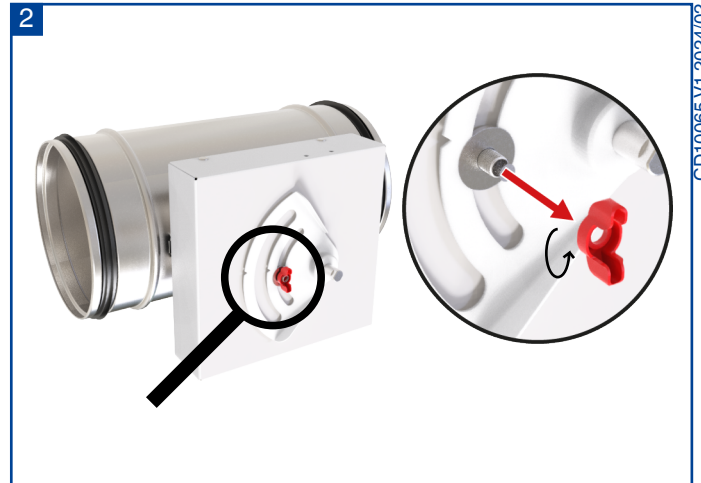
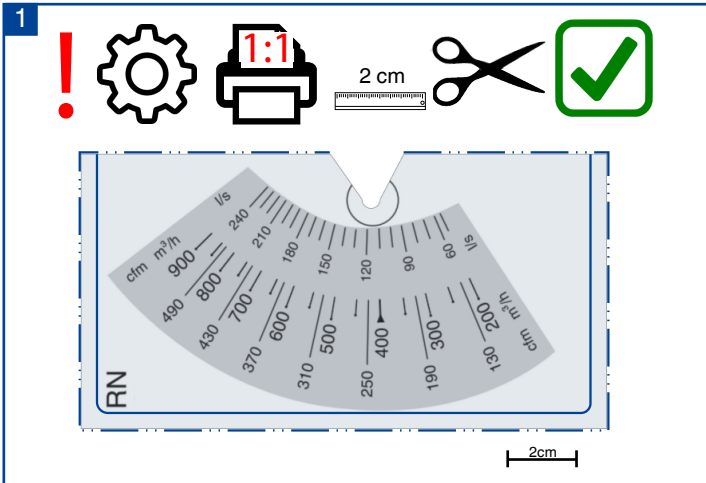
TROX® **TECHNIK**



RN/RN-Ex 315

Hilfe zur Sollwerteinstellung bei beschädigter/unleserlicher Skala
Setpoint adjustment aid for damaged/illegible scale

TROX® **TECHNIK**



RN/RN-Ex 400

Hilfe zur Sollwerteinstellung bei beschädigter/unleserlicher Skala
Setpoint adjustment aid for damaged/illegible scale

TROX® **TECHNIK**

